



**SELFIRE**  
FIRE RATED  
DUCTWORK

# EN 1366 PART 1

**90 MINUTE FIRE RATED DUCTWORK**

**CLASSIFIED TO PRODUCT  
STANDARDS EN 15871**

---

Tested to EN 1366-1 fire rated for  
Kitchen Extract, Passive and  
Pressurisation Ventilation Systems

---

Meets EN 15871 requirements and  
standards for fire-resisting ductwork

---



---

## 90 Minute fire rated ductwork

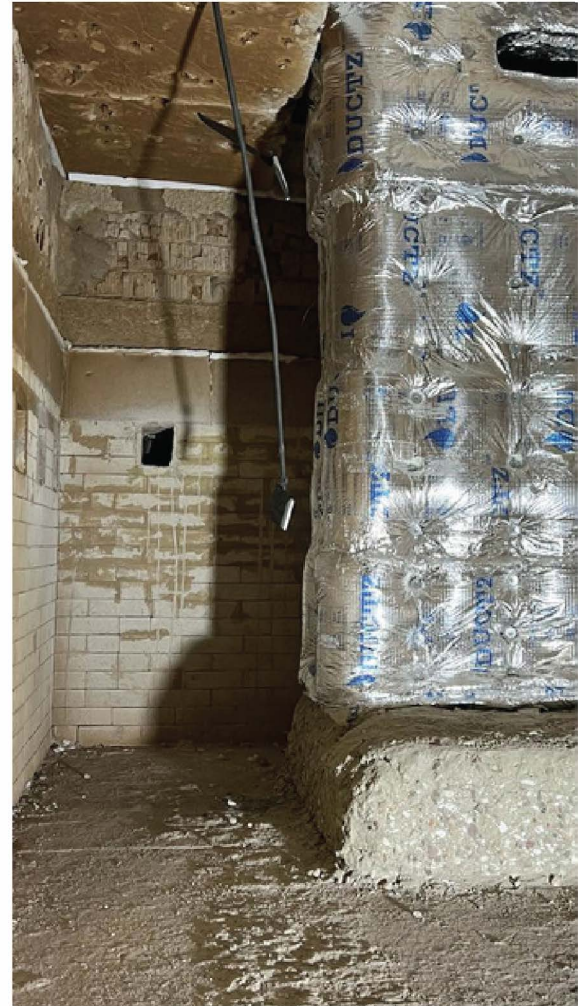
### About

Selfire fire-rated ductwork has been designed to suit the various safety requirements within the modern day construction industry.

The prevention of fire spreading throughout duct systems is of critical importance.

Non-fire resistant ductwork systems can be responsible for allowing the initial spread of the fire and smoke between compartments.

The current use of fire-rated ductwork is to maintain fire compartmentation and assist in the safe dispersal of hazardous smoke and fumes.



---

### Tested to:

- EN 1366 Part 1
- Insulated & Non-Insulated
- 1100°C test for Insulated & Non-Insulated
- Tested Vertically & Horizontally in both fire types A & B
- Test Includes Access Doors
- 1250 mm x 1000mm Max Duct Size

---

## A Clients Perspective

### A Product To Be Confident In

- Selfire fire rated duct is non-coated and delivered ready for installation. Factory Control (FPC Standards) ensures that the product complies to the standards applied during our independently verified tests.
- Each installation complies to a strict code which specifies rod diameters, support centres, types of mounting struts and fire rated sealants.
- Instruction manuals provided for installation.
- The robustness of this product allows for fast installation without chipping and is suitable for construction site conditions.
- Selfire duct is available in square - 1250 x 1000 mm. Max size allowed.
- Tested with Ductz fire rated insulation.



---

### Quality:

- Sampling records maintained.
- Fully tested to EN 1366 Part 1 standards.
- Manufactured and installed to the highest of standards.

### Installation:

- Clear guidelines and instructions to the appointed installer.
- Third party certification.

### Materials:

- Made from sheet metal, no coating required.
- Flanging system and standard stiffening system.
- Product clearly marked as a Selfire product.

---

**Applus<sup>+</sup>**  
certification

Selfire products are easily verified after installation for compliance with independent verified standards.

---





**SELFIRE**  
FIRE RATED  
DUCTWORK

# Selfire

## EN Fire Rated Ductwork

### Want to become a Selfire Licensee?

1. Gives you the ability to manufacture Selfire products in your factory.
2. Full training will be provided on manufacturing and installation.
3. Recieve an independent Certification.

